

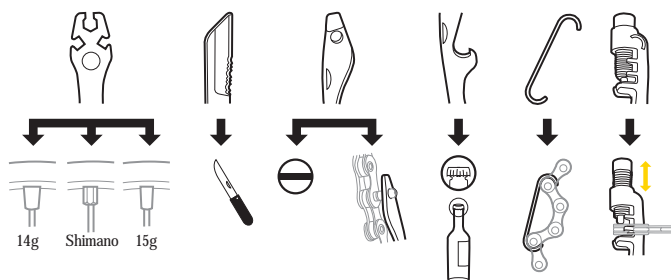
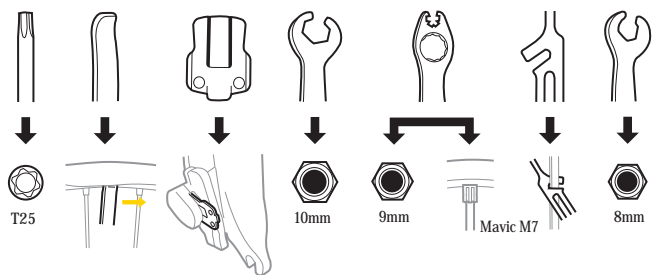
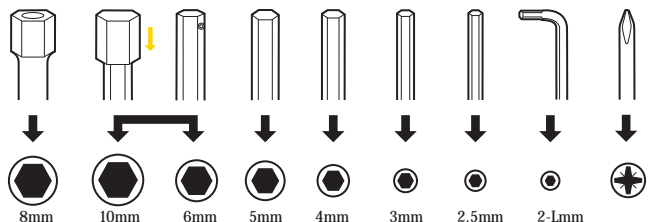
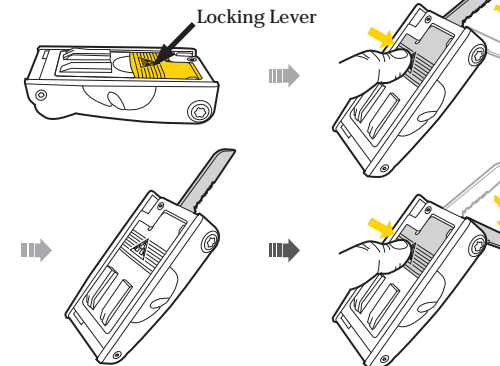
Congratulations on your purchase of Topeak's ALiEN III tool. It's the first two-piece mini tool designed for both road and mountain cyclists. The ALiEN III tool folds neatly for easy storage and carrying. Each tool is designed for maximum durability and strength for years of trouble-free use.

This guide will instruct you in the proper use of your ALiEN III tool.

Please read all instructions and warnings carefully before using the ALiEN III tool.

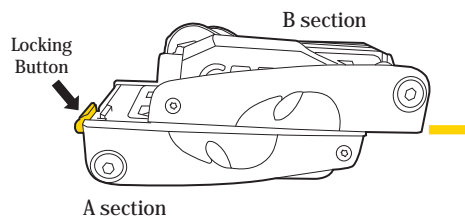


The locking lever is used to lock tools in place during use, and to keep tools from deploying when stored. For additional safety, the locking lever is also used for knife blade storage.



Separating two sections

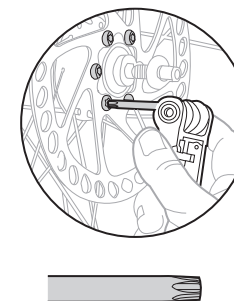
1. Depress the locking button with your thumb.
2. Slide the sections apart.



WARNING
The knife blade on the ALiEN III is sharp. Be careful when using the knife blade. Use extreme caution when opening and closing your ALiEN III tool.

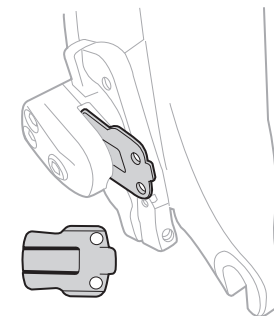
Using the T25 Torx Wrench

Tighten disc brake rotor bolts with the T25 Torx wrench.



Using the Disc Brake Pad Spacer

Fit a disc brake pad SPACER in each caliper when transporting with unmounted front and /or rear wheel(s) with hydraulic disc brakes.



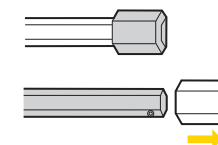
Using Locking Lever on B section



WARNING
The B section contains a very sharp knife blade. Be careful when using the knife blade. Make sure the knife blade is locked securely in the open position when used. Failure to lock knife blade during use can result in serious injury. Be careful when storing knife blade. Make sure all fingers are clear of blade path. Be sure knife blade is locked closed during storage to prevent accidental deployment.

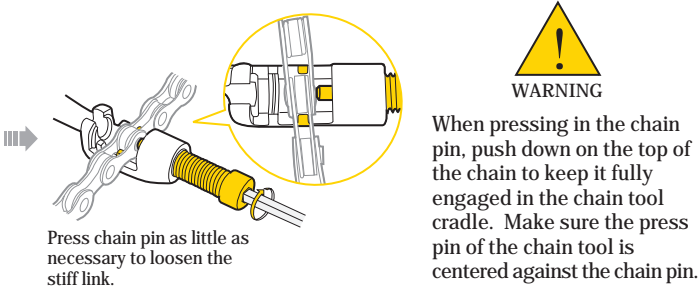
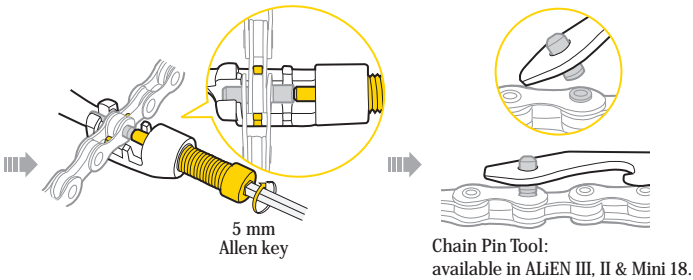
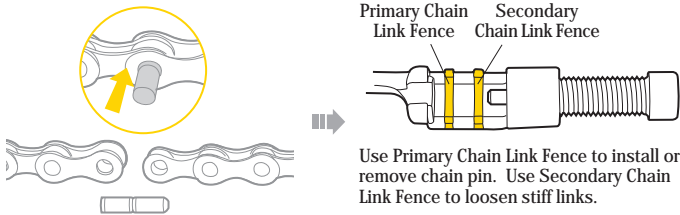
Using the 6mm and 10mm Allen Keys

The 6mm and 10mm Allen keys are combined. Remove the 10mm Allen head to use the 6mm Allen key. Add the 10mm Allen head to use on crank bolts.

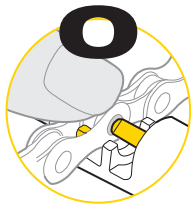
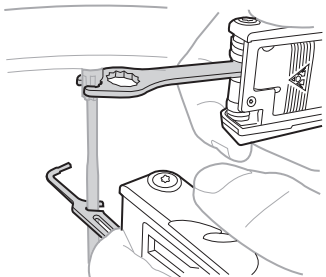


Using Chain Tool

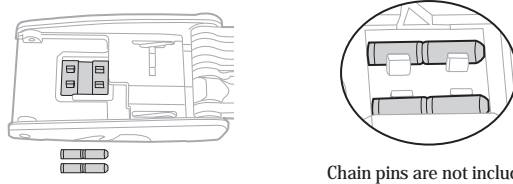
Install new chain pin or remove old chain pin.



Spoke Wrenches for Mavic M7

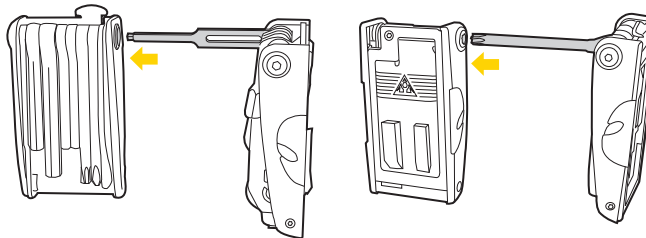


Chain Pin Compartment

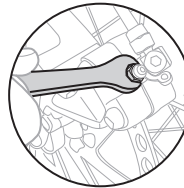


Tool maintenance

The folding resistance of the A section and the B section can be adjusted by using the 2.5mm Allen key or T25 Torx wrench.



NOTE: 8mm open end wrench should be used for disc brake bleed nuts only.



NOTE: Lubricate ALiEN III tool with teflon based lubricant when needed.

WARRANTY

2-year Warranty: All mechanical components against manufacturer defects only.

Warranty Claim Requirements

To obtain warranty service, you must have your original sales receipt. Items returned without a sales receipt will assume that the warranty begins on the date of manufacture. All warranties will be void if the ALiEN III is damaged due to user abuse, tool or body alterations, modification, or used in any way not intended as described in this user's guide.

* The specifications and design are subject to change without notice.

Topeak products are available only from professional bicycle shops.

Please contact your nearest Topeak authorized bicycle dealer for any questions.

For customers in the USA, call: 1-800-250-3068 Website: www.topeak.com

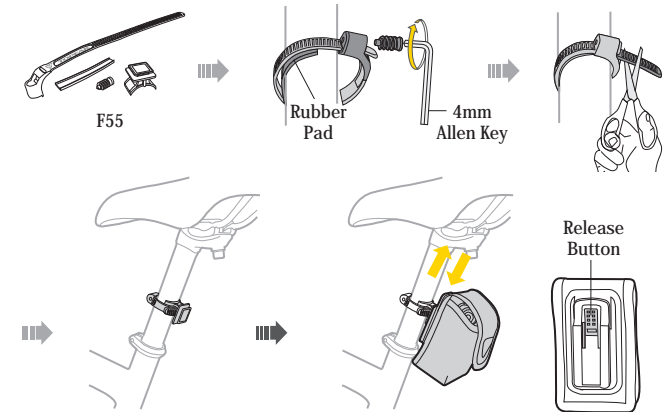
Copyright © Topeak, Inc.

M-TT2354-6 GB 10/08

OPTIONAL PARTS (sold separately)



Mount clip bag on seat post



Mount clip bag on stem

